


PROMINENCE
ESTATES



RESIDENTIAL
PROPERTY EXPERTS

COVENTRY, WARWICKSHIRE
& LEAMINGTON SPA

LARCHWOOD ROAD,
EXHALL, CV7 9GD

£1,100 PER CALENDAR

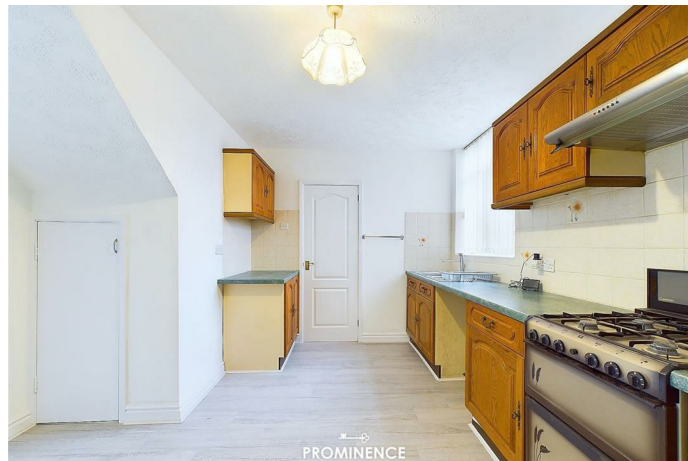
LARCHWOOD ROAD

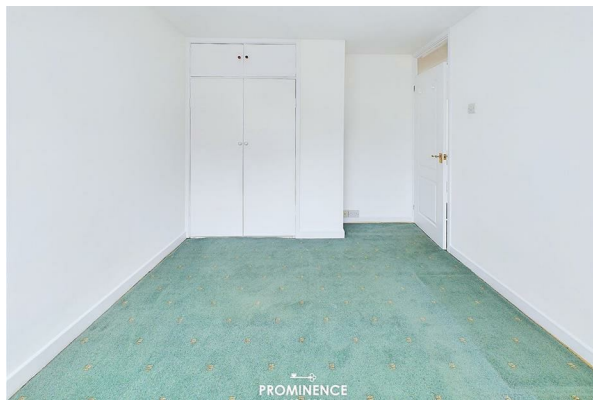


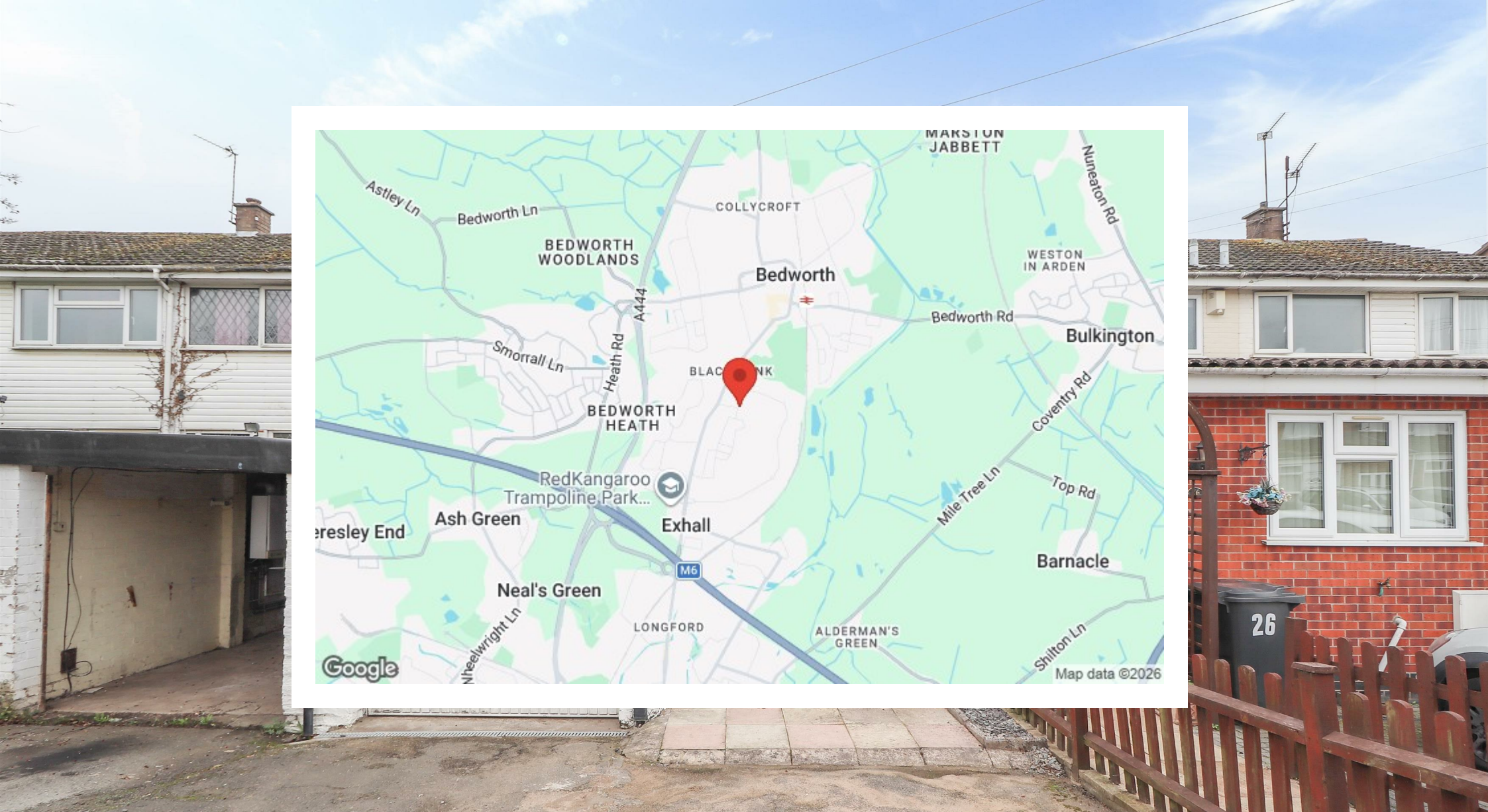
PROMINENCE
ESTATES

This spacious 3-bedroom home, set in a peaceful location, offers a perfect blend of comfort and convenience. The property features ample living space with well-proportioned rooms, ideal for families or those looking to enjoy extra space. Two bedroom's come with built-in wardrobes, providing plenty of storage. The house includes driveway parking, ensuring easy access and secure parking. Outside, a low-maintenance garden offers a large outdoor space without the hassle of upkeep. Available unfurnished, this home is ready for you to make your own.

To arrange a viewing please call Prominence Estates on 02476309826







Prominence Estates
5 Queen Isabels Avenue,
Cheylesmore,
Coventry,
CV3 5GE

02476 309 826
lettings@prominenceestates.com
www.prominenceestates.com


PROMINENCE
— ESTATES —